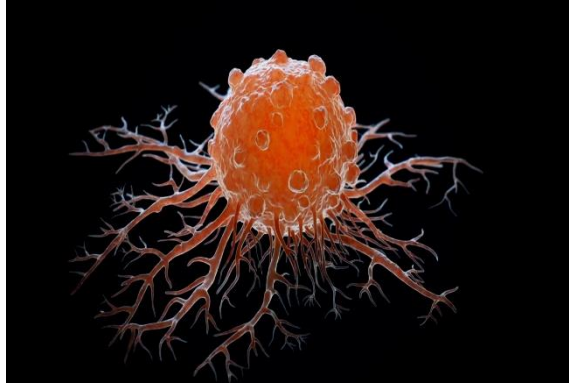




Appealing for Aid to the oncology, Burn and thalassemia Hospital in NES

Due to the war conditions that the region has gone through for more than a decade, besides using all kinds of weapons that destructed the oil and gas facility causing the leakage of toxic substances and gases into the environment as well as other economic-industrial, socio-political, psychosocial factors, etc., in addition to the biological causes, all that led to increasing the rate of diseases, including serious diseases, like cancer which is danger to the whole society.



A frightening increase in cancer rates has been tracked recently in northern and eastern Syria/NES. However, the patients are facing a lot of difficulties like the siege on the region, the poor financial situation of travel costs, treatment and others. After conducting a study on cancer,



the Kurdish Red Crescent Organization/KRC/ decided to establish a hospital for tumors, burns and thalassaemia in the city of Qamishlo although the capabilities are limited. The hospital was opened at the end of last year and the work started with giving some doses to patients and providing the medicines supervising by a medical team, specialized doctors, capable nurses and Lab team to conduct the necessary analyzes. But the hospital still needs equipment to enable it providing medical service to the cancer, burns and thalassaemia

Kurdish Red Crescent, KRC – Heyva Sor A Kurd NGO

Headquarters: Kornish district – Eben Hesham street, building num. 12 Al-Qamishli – Syria

Tell: +963 52 430 700 - email: info@hskurd.org - website: www.hskurd.org



patients well to cover the needs of the patients and provide early detection through periodic examination.



We appeal to all health international and humanitarian organizations and social figures to provide us with all the necessary needs like medical devices, medicines and other medical materials.

We also appeal good doctors for help by coming to the area and contributing to the treatment of patients and also training our medical staff in order to expand and develop the services, so they can meet the needs of the patients in the hospital .

Hoping that you do your humanitarian and moral duty towards the peoples of NES

Needs / medical devices and materials



Estimated balance of the Cancer centre (Equipment) - Al-Qamishli / Kurdish Red Crescent

| C | Item | Detailed description | الوصف | Unit | quantity |
|----|---------------------|--|--|------|----------|
| C1 | ultra sound | convex, linear, heart, biopsy, color doppler, printers | ايكو بروبوت كونفيكس و خطي و فليي ملون مع طباعة | عدد | 1 |
| C2 | mamograph | digital ,two size of detectors | ماموغراف كاشف فيايبين | عدد | 1 |
| C3 | printer | lasser , 3 size of films | طابعة ليزيرية ثلاث قياسات من الافلام | عدد | 1 |
| C4 | patient bed | electric, two motors | سرير مرطني بمحركين كهربائيين | عدد | 12 |
| C5 | bed head unit | o2 , suction ,3 electric socket120 long two light sorce up and down ,cream color | مأخذ غازات و كهرباء و اضاءة طول 120 سم | عدد | 12 |
| C6 | serum holder | stainless steel , 5 good wheels | حامل المصل / كيس السيروم | عدد | 15 |
| C7 | ECG | 12 chanel , printer , monitor , trolley | جهاز تخطيط كهربائية القلب مع شاشة و 12 قناة | عدد | 2 |
| C8 | bio patient monitor | temp , spo2 , nibp , ecg | جهاز مراقبة العلامات الحيوية / حرارة و اكسجة و قلب و ضغط | عدد | 4 |
| C9 | computer tomograph | | | عدد | 1 |



Estimated balance of the thalassemia centre & blood bank (equipment) - Al-Qamishli / Kurdish Red Crescent

| A | Item | Detailed description | الوصف | Unit | quantity |
|-----|--------------------------------------|---|--|------|----------|
| A1 | thalassemia syringe pump | infusion rate 1- 99 ml/h -- syringe volume 1 to 20 ml | معدل ضخ من 1 ل 99 مل / سا * حجم السريج من 1 ال 20 مل | عدد | 50 |
| A2 | blood doner chair | Structure of blood donor couch made with stainless steel. Seamless upholstery. In standard the chair is equipped with one hand support; Measuring range: 0-25.6 g/dL; 0-15.9 mmol/L No calibration required | هيكل الكرسي مصنوع من الساتلس ستيل * مجهزه بسند يد للتمتع | عدد | 4 |
| A3 | hemoglobin measure machine | | مجال القياس من 0.25 - 6 غايل اه 0.15 - 9 ممول ال | عدد | 2 |
| A4 | weighing scale | | | عدد | 2 |
| A5 | mixing and weighing for blood bag | Mixing 20 RPM; Weighing range: 0-990 g | مجال الدوران 20 دالقيته * مجال الحجم 0-990 غ | عدد | 4 |
| A6 | ABO blood groupe | auto | الي | عدد | 1 |
| A7 | blood refrigerator | Forced air cooling system gross volume about 400 l digital display and recording for alarms | تبريد هواء الحجم 400 ل شاشة رقمية * سجل للتحذارات | عدد | 3 |
| A8 | blood compenents seprator centerfuge | max speed 5000 rpm max blood bag 12 pre cooling facility | سرعة قصوى 5000 دورة / دقيقة سعة 12 كيس دم إمكانية تبريد اولى | عدد | 2 |
| A9 | frezzer | minus 18 C | درجة حرارة حتى -18 م | عدد | 1 |
| A10 | incubater and mixer for platetes | comprosserless cooling color , touch screen 8-16 Apherisis Bags or more | تبريد بدون ضاغط شاشة لمس ملونة من 8 ال 16 كيس او اكثر | عدد | 2 |
| A11 | viruses analyzer | auto | الي | عدد | 1 |
| A12 | microscope | digital , high quality resoluion camera and screen | رقملي * كاميرا دقة عالية مع شاشة | عدد | 2 |
| A13 | hemoanalyzer | Measured Parameters: WBC, RBC, THR, Hb, MCV Calculated Parameters: Lym%, Lym#, Mon%, Mon#, Gra%, Gra# Hct, MCH, MCHC, RDW, MPV, Pct, RDW | قيس : WBC, RBC, THR, Hb, MCV #Lym%, Lym#, Mon%, Mon#, Gra%, Gra : Hct, MCH, MCHC, RDW, MPV, Pct, RDW | عدد | 1 |
| A14 | auto chemical analyzer | open system , 30 sample per hour , high quality mesurements | نظام مفتوح * 30 عينة / ساعة / دقة نتائج | عدد | 1 |
| A15 | tubes mixer | rollers , speed 10 to 100 rpm | اسطوانية * سرعة دوران 10 الي 100 دورة / دقيقة | عدد | 2 |
| A16 | tubes shaker | two tyoe of working :press ,continus , variable speed | حجم 250 لتر | عدد | 2 |
| A17 | dry incubater | 250 l | جودة عالية * سرعة اعظمية 6000 دورة / دقيقة | عدد | 1 |
| A18 | tube centerfuge | high quality , max 6000 rpm | جودة عالية * سرعة اعظمية 12000 دورة / دقيقة | عدد | 1 |
| A19 | HCT centerfuge | high quality , max 12000 rpm | | عدد | 1 |

Kurdish Red Crescent, KRC – Heyva Sor A Kurd NGO

Headquarters: Kornish district – Eben Hesham street, building num. 12 Al-Qamishli – Syria

Tell: +963 52 430 700 - email: info@hskurd.org - website: www.hskurd.org



| Estimated balance of the Burn treatment centre (Equipment) - Al-Qamishli / Kurdish Red Crescent | | | | | |
|---|--------------------------------------|--|--|------|----------|
| B | Item | Detailed description | التوضيح | Unit | quantity |
| B1 | digital float table X ray | 500 mA ,120KV . | جهاز 500 مبي أمبير و 120 كلفولت | عدد | 1 |
| B2 | digital film printer | two size of films | قلمون من الألفم | عدد | 1 |
| B3 | mobile X ray | digital WIFI , CD printer | بروبل كورنكس و خطبة و قلمى * عربة - طابعة | عدد | 1 |
| B4 | W/B ultrasound | convex , linear , pen * TROLLY * PRINTER | سائلس سائل | عدد | 2 |
| B5 | medical bathtub for burn patients | stainless steel | سائلس سائل | عدد | 1 |
| B6 | digital endoscope for colon and stom | CCD ,medical monitor | كاميرا مع شاشة طبية | عدد | 1 |
| B7 | hematology analyzer | Measured Parameters: WBC, RBC, THR, Hb, MCV Calculated Parameters: Lym%, Lym#, Mon%, Mon#, Gra%, Gra# Hct, MCH, MCHC, RDW, MPV, Pct, RDW | قيس : WBC, RBC, THR, Hb, MCV #Calculated Parameters: Lym%, Lym Mon%, Mon#, Gra%, Gra# Hct, MCH MCHC, RDW, MPV, Pct, RDW | عدد | 1 |
| B8 | microscope | with lenses 4,10,40,100 | عدسات 100-40-10-4 | عدد | 2 |
| B9 | semi auto chemical analyzer | filters:340 nm, 405 nm, 510 nm, 546 nm, 578 nm, 620 nm LED color display | فلتر 620-578-546-510-405-340 LED شاشة لمس ملونة | عدد | 1 |
| B10 | HCT centrifuge | speed up to 12000 rpm and time up to 30 min | سرعة 12000 و اطي زمن 30 دقيقة | عدد | 1 |
| B11 | tube centerfuge | speed up to 8000 rpm and time up to 30 min | سرعة 8000 و اطي زمن 30 دقيقة | عدد | 1 |
| B12 | dry incubator | 100 L , 37°C | حاضنة جافة 100 لتر 37 درجة مئوية | عدد | 1 |
| B13 | autoclave | 70 L ,electric programes | مضخة رطبة 70 لتر أو أكثر كهربائية مع برامج | عدد | 1 |
| B14 | ESR tubes holder | | | عدد | 1 |
| B15 | tubes shaker | two tyoe of working :press ,continus | نمطون عمل :ممتس /مضط | عدد | 1 |
| B16 | tubes mixer | rollers , speed 10 to 100 rpm | السطوانة - سرعة من 10-100 ثورة في الدقيقة | عدد | 1 |
| B17 | wet incubator | 10 L , 37°C | حجج 10 لتر أو أكثر -حرارة 37 درجة مئوية | عدد | 1 |
| B18 | blood gases analyzer | cassette | كاسيتات مع توفى المواد خدمة الصيانة | عدد | 1 |
| B19 | electrolytes analyzer | Na,Ca,K Cl | صوديوم و بوتاسيوم و كلور و كالسيوم | عدد | 1 |
| B20 | bio signals monitor | SPO2,NIBP,IBP,T,ECG | إشارات أكسجة و قلب و ضغط مياتر و غير مياتر و درجة الحرارة | عدد | 5 |
| B21 | ventilator | adult and child | اطفال و بالغين جودة عالية - جميع أنماط التنفس | عدد | 4 |
| B22 | syringe pump | flow rate : 0.1 to 1300 ml per hour max pressure : 1200 kpa | معدل 0.1 إلى 1300 مل/س صنتظ حتى 1200 ك بالكال | عدد | 10 |
| B23 | suction machine | 700 mmhg,40 l/min | معدل سحب 700 مم زئبقى / - ضغط سالب حتى 700 مم زئبقى | عدد | 3 |
| B24 | defibrilator | with monitor | مع مونيترور | عدد | 2 |
| B25 | electocardiogram | 12 channel with monitor | مع شاشة و 12 قناة | عدد | 1 |
| B26 | operating light | LED, two heads 40000 lux | رأسين و ليدات و شدة اضائة 40000 لوكس | عدد | 1 |
| B27 | anesthesia machine | two vapores,monitor ventilator | مختلن هلاتن و الأرواقوران مع شاشة و مقنسة آلة | عدد | 1 |
| B28 | coagulator | 400 W | استطاعة 400 واط | عدد | 1 |
| B29 | manual dermatome | | | عدد | 1 |
| B30 | electro dermatome | Cutting range from 0.004"- 0.024" (0.1 mm – 0.60 mm) Sealed to enable soaking and easy removal of debris | معدل قطع بمسكة 0,1 إلى 0,6 مم محمكة الإغلاق قليلة للتطس | عدد | 1 |
| B31 | skin interlocking machine | | | عدد | 1 |
| B32 | doppler machine | small | صغتر لسماع صوت تلفف البد في الأوعية الدموية | عدد | 2 |
| B33 | dry sterilizer | 100 L , 200 °C , timer | حجج 100 لتر 200 درجة مئوية و مؤقت زمني | عدد | 1 |
| B34 | hemodialyzer machine | fresenius 5008 0r equivalent | فريسنوس 5008 أو مكافؤة | عدد | 2 |
| B35 | water treatment station for hemdialy | capacity 50 lh | سعة 50 لتر بالساتة أو أكثر | عدد | 1 |
| B36 | operating table | electric for general surgery | كهربائية و للجراحة العامة | عدد | 1 |



| Estimated balance of the Infrastructure works - Al-Qamishli / Kurdish Red Crescent | | | | | |
|--|---|--------------------------------|--|------|----------|
| D | Item | Detailed description | التوضيح | Unit | quantity |
| D1 | medical gases network | O2,vacume,MA4 | شبكة غازات طبية ادابيب نحاس اطوار مختلفة | عدد | 1 |
| D2 | O2 generation station and medical gas network | capacity 15 m3/h | محطة توليد اكسجين سعة 15 م مكعب بالساعة | عدد | 1 |
| D3 | autoclave | horizontal ,250 L | المحم و عاء معدني للتتعقيم / الفقية 250 لتر | عدد | 1 |
| D4 | autoclave | vertical ,100 L | المحم و عاء معدني للتتعقيم / صوديوية 100 لتر | عدد | 1 |
| D5 | laundry machine | 40 kg heavy duty | آلة الغسيل / سعة 40 كيلو غرام صناعية | عدد | 1 |
| D6 | laundry machine | 20 kg | آلة الغسيل / سعة 20 كيلو | عدد | 1 |
| D7 | refrigerator | dual door , 400 L | براد | عدد | 1 |
| D8 | freezer | dual door , 300 L | تلاجة | عدد | 1 |
| D9 | dishwasher | | جلاية صحون | عدد | 1 |
| D10 | oven | with 4r electro heating plates | فرن كهربائي | عدد | 1 |
| D11 | deep fryer | | فلاية فلاية | عدد | 1 |
| D12 | sheet pan racks | | رفوف نقل طعام كروم غذائي | عدد | 1 |
| D13 | preperation table | | طاولة تحضير طعام كروم غذائي | عدد | 1 |

Kurdish Red Crescent, KRC – Heyva Sor A Kurd NGO

Headquarters: Kornish district – Eben Hesham street, building num. 12 Al-Qamishli – Syria

Tell: +963 52 430 700 - email: info@hskurd.org - website: www.hskurd.org



| Estimated balance of the medical services (Equipment) - Al-Qamishli / Kurdish Red Crescent | | | | | |
|--|-------------------|-------------------------------|---|------|----------|
| E | Item | Detailed description | التوضيح | Unit | quantity |
| E1 | Bed head unit | electric , light ,gas sources | مأخذ كهرباء و غازات و اناقة | عدد | 42 |
| E2 | patient bed | two motors | سرير مرضى بمحركين | عدد | 38 |
| E3 | VIC patient bed | four motors | سرير مرضى بأربع محركات | عدد | 4 |
| E4 | four wheels chair | active | كرسي متحرك بأربع دولاب | عدد | 15 |
| E5 | stretcher | hydrolic, up -downn ... | نقالة مرضى هيدروليكية - رفع تنزيل ستانليس | عدد | 12 |
| E6 | serum holder | stainless steel | حامل المصل / كيس السيروم | عدد | 50 |
| E7 | fabric trolley | stainless steel | عربة متنقلة للقماش | عدد | 6 |
| E8 | garbage basket | stainless steel | سلة مهملات | عدد | 20 |

Needs / Medicines

Kurdish Red Crescent, KRC – Heyva Sor A Kurd NGO

Headquarters: Kornish district – Eben Hesham street, building num. 12 Al-Qamishli – Syria

Tell: +963 52 430 700 - email: info@hskurd.org - website: www.hskurd.org



| description | dosage | Unit form |
|--------------------------|-------------|-----------|
| Letrezol | 2.5 mg | tab |
| Tamoxifin | 20 mg | tab |
| Anastrazol | 1mg | tab |
| Doxorubicin | 50mg | Vial |
| Endoxan /Cyclophosphamed | 1g | Vial |
| Gemzar/Gemcitabine | 1g | Vial |
| carboblalin | 450mg /45ml | Vial |
| Vencristin | 1mg/1ml | Vial |
| Vinblastine | 10mg /10ml | Vial |
| Bleomycin | 30IU | Vial |
| Dacarbazine | 200mg | Vial |
| Calcium Folinat | 50mg | Vial |
| Taxol/Paclitaxel | 100mg | Vial |
| Fluorescein | 500mg /5ml | Vial |
| Zometa/zolondronic acid | 4mg | Vial |
| taxoter/docetaxel | 80mg /4ml | Vial |
| zolondric acid | 5mg /100ml | Vial |
| Casodex (Bicalutamide) | 50 mg | tab |
| Hidroxyurea | 500 mg | tab |
| Imatinib | 400 mg | tab |
| thalidomide | 100 mg | tab |
| Mercaptopurine (6-MP) | 50mg | tab |
| merthotrexat | 2.5 mg | tab |
| Epotin | 4000 IU | syring |

| description | dosage | Unit form |
|---------------------------------|-----------------------|-------------------|
| Neupogen | 300 mcg | syring |
| deferiprone | 500 mg | tab |
| Defrasiron | 500 mg | tab |
| Desfral | 500 mg | tab |
| Tacrolimos | 1 mg | tab |
| mecofenolat (celecept) | 500 mg | tab |
| Siclosporin | 100 mg | tab |
| Adrenaline (Epinephrine) | 1mg/ ml | Ampoule |
| Atropine | 1mg (sulfate) in 1-ml | amp |
| Chlorpheniramine | 10 mg/MI | Ampoule |
| Diclofenac | 75 mg/ 3ml | amp |
| Dexamethasone | 4 mg/ml 8mg/ml | Ampoule |
| Furosemide | 10mg/ml | Ampoule |
| Hydrocortisone sodium succinate | 100 mg | vial |
| Hyoscine butylbromide | 20mg/ml | Ampoule |
| Mixed insulin | 100IU/ml | vial |
| Rapid insulin | 70/30 | vial |
| Metoclopramid | 10 mg. In 2ml | amp |
| Glyceryl trinitrate | Transdermal patch 10 | Transdermal patch |
| Ondanestron 4 | 4mg | amp |
| Ondanestron 8 | 8mg | amp |
| Paracetamol | 10mg/ml | vial |
| Potassium chloride | 0.15 | amp |
| Rantidin | 2mg | amp |
| Tramadol | 100mg | amp |



| description | dosage | Unit form |
|--|--------------|-----------|
| Glucose (Dextrose) | 5% /1000ml | serum |
| Glucose (Dextrose) | 5% /500ml | serum |
| Sodium chloride (Normal Saline) | 0,9% /1000ml | serum |
| Sodium chloride (Normal Saline) | 0,9% /500ml | serum |
| Sodium Lactate Solution (Ringer) | 1000mg | serum |
| Sodium Lactate Solution (Ringer) | 500 mg | serum |
| face mask | | Box (50) |
| Cotton roll 100% cotton wool roll, roll sizes:1kg | | Piece |
| Cotton roll 100% cotton wool roll, roll sizes: 0.5kg | | Piece |
| plasters 2.5cm | 2.5*5 M | Piece |
| Plasters 5cm | 5*5 M | Piece |
| blood bag | | Piece |
| micro drop | | Piece |
| infusion set | | Piece |
| Insulin syringes | | Box (300) |
| syring 3ml | | Box(100) |
| syringes 5ml | | Box(100) |
| syringes 10ml | | Box(100) |
| syriges 50ml | | Box(100) |
| tongue depressor | | |
| Cannula(IV catheter) 16G (Grey) | | Box (100) |
| Cannula(IV catheter)18G (Green) | | Box (100) |
| Cannula(IV catheter) 20G (pink) | | Box (100) |
| Cannula(IV catheter) 22G (blue) | | Box (100) |
| Cannula(IV catheter) 24G (Yellow) | | Box (100) |

| description | dosage | Unit form |
|---|--------|-----------|
| Oxygen mask - adult | | Piece |
| Oxygen mask - pediatric | | Piece |
| Gauze Bandages, 100% cotton gauze bandage, 23g/m2, 10cm | | Piece |
| Gauze Bandages, 100% cotton gauze bandage, 23g/m2, 5cm | | Piece |
| Compressed sterile gauze, 100% cotton, 10*10cm | | Piece |
| Gloves for examination- latex, Small | | Box (100) |
| Gloves for examination- latex, Medium | | Box (100) |
| Gloves for examination- Latex, Large | | Box (100) |
| Povidone | | |
| Alcohol | | |
| ECG patch Electrode. pediatric. | | |
| ECG patch Electrodes. Adult. | | |
| Ultrasound gel 1 Liter. | | |
| Hand Sanitizer 70% of alcohol | | |
| Kitchen Gloves *L | pair | L |
| Boots | pair | 37 |
| Latex Surgical Gloves *7 | Piece | 7 |
| Latex Surgical Gloves *6.5 | Piece | 6.5 |
| Latex Surgical Gloves *8 | Piece | 8 |
| Latex Surgical Gloves *7.5 | Piece | 7.5 |
| Alverin 40mg | 40mg | Amp |
| Filgrasim 300mcg | 300mcg | vial |
| Erythropiotin | 4000IU | vial |
| Ceftriaxone | 1 G | vial |
| Salbutamol | | Amp |

Kurdish Red Crescent, KRC – Heyva Sor A Kurd NGO

Headquarters: Kornish district – Eben Hesham street, building num. 12 Al-Qamishli – Syria

Tell: +963 52 430 700 - email: info@hskurd.org - website: www.hskurd.org



| description | dosage | Unit form |
|--------------------|--------|-----------|
| Metronidazole | 100ml | vial |
| Budesonide 0.25mg | 0.25mg | Amp |
| Omeprazole | 40mg | vial |
| Savlon | | |
| TREEWAY | | |
| Tamoxifin 20 | 20mg | Tab |
| Tamoxifin10 | 10mg | Tab |
| Hydroxyurea | 500mg | Tab |
| Temozolomide | 100mg | Tab |
| Hodpro | 50mg | Tab |
| Thalidomide | 100mg | Tab |
| Sorafenib | 200mg | Tab |
| Doxycyclin | 100mg | Tab |
| Rifampicin | 300mg | Tab |
| Rifaximin | 550mg | Tab |
| Ranexa(ranolazine) | 500mg | Tab |
| Ethambutol | 400mg | Tab |
| Sertraline 50 | 50mg | Tab |
| Sertraline 100 | 100mg | Tab |
| Enoxaparin | 4000IU | syring |

There is also an urgent need for Volunteer Doctors to join us and help, whether in treatment or giving training within the specialties (general surgery - vascular surgery - cosmetic and burns - tumors - thalassaemia)

Kurdish Red Crescent

25/3/2024